

E N G I N E E R I N G

M A N A G E M E N T

E N G I N E E R I N G

D E S I G N

E N G I N E E R I N G

S U P E R V I S I O N

E N G I N E E R I N G

D E V E L O P M E N T

E N G I N E E R I N G

A COMPANY THAT VALUES HAPPINESS ABOVE ALL ELSE



C O N S T R U C T I O N

M A N A G E M E N T

C O N S T R U C T I O N

D E S I G N

C O N S T R U C T I O N

S U P E R V I S I O N

C O N S T R U C T I O N

D E V E L O P M E N T

C O N S T R U C T I O N

# Contents

UTOP Builds Happy City

## 04 CEO's Message

Total Solution Service Leader

## 06 UTOP History

- Today & Tomorrow
- Company Overview
- Brand

Top Creative Builder

## 16 UTOP Power

- Supervision & Management Division
- Architectural Design Division
- Construction Development Division
- Hotel & Leisure Division
- Civil Engineering Division
- Foreign Construction Division

Warm Hearted Creator

## 44 UTOP Love

- UTOP of the TOP
- Social Contribution
- UTOP Network



# UTOP BUILDS HAPPY CITY

UTOP: A company that values  
happiness above all else.  
With unending passion and  
always challenging ourselves,  
we build not just buildings, but  
happy cities.

*UTOP provides happiness as  
its greatest value.*



## CEO MESSAGE



From the moment we took our first steps in 1982, happiness has been UTOP's starting point as well as our ultimate goal.

In the last few years, UTOP has been creating warm spaces where people and nature co-exist in all areas of construction, including supervision, CM, design, and engineering.

With the world's best technology (Universe-TOP) and the realization of a customer-first approach (YOU-TOP) forming the company's philosophy, from the design drawings to the construction site, not a single line nor brick is wasted.

In a rapidly changing society, UTOP builds happiness to provide a place where anyone can settle and set out with creativity and insight.

With depth of experience and excellent technical skills and talent as its foundation, UTOP is growing into a comprehensive construction group that will lead the construction culture of Korea.

With its firm belief in building happiness, sincere passion, and unwillingness to settle in the present, UTOP Group will be reborn as a trusted and respected company that looks forward to tomorrow.

Thank you.

UTOP CEO Jung Byung-rae

A handwritten signature in black ink, written in a cursive style. The signature appears to be 'Jung Byung-rae' in Korean characters.



# Total Solution Service Leader



## UTOP History

UTOP: Adorning a new page in Korean architectural history as the best architecture “Total Solution Service Leader”! Making spaces more valuable, UTOP marches on today and into tomorrow.

- 08 Today & Tomorrow
- 10 Company Overview
- 12 UTOP Brand - UTOP UBLESS
- 14 UTOP Brand - U TECH VALLEY

# UTOP HISTORY

UTOP's path for more than 40 years.



## 1990-2002

- 1990 · Registered as Architectural Execution & Inspection Firm
- 1996 · Registered as General Inspection Company  
· Registered as Engineering Business
- 1997 · Registered as Electric Facilities Design Business and Inspection Business
- 1998 · KS Q ISO 9001 / ISO 9001 certified
- 2000 · Renamed to UTOP Engineering & Architecture Co., Ltd.  
· Registered as Construction Business and Civil Engineering Business  
· Registered as Fire-Fighting System Inspection & Design Business
- 2001 · Registered as Architectural Business  
· Registered as Facility Maintenance Business  
· Registered as Construction Engineering and Overseas Construction Business
- 2002 · Registered as Housing Construction Business Operator

## 2003-2010

- 2003 · UTOP Construction Co., Ltd. established
- 2005 · Registered as Fire-Fighting System Business
- 2008 · Registered as Rental Business Operator
- 2009 · Registered as Safety Diagnosis Institution  
· KS I ISO 14001 / ISO 14001 certified
- 2010 · Selected as Excellent Supervision Company by Korea Land & Housing Corporation  
· Received commendation from Minister of Land, Transport, and Maritime Affairs on "World CM Day"  
· Registered as Real Estate Development Business







2011

- Inauguration of Jung Byung-rae as CEO
- Inauguration of Choi Suk as Chairman
- Selected as 2011 Top Company for Excellent Labor-Management Culture
- Received 2011 Hankyung Housing Culture Award, Urban Lifestyle Housing Sector
- Received Presidential Commendation for Employment Promotion for the Elderly, 2011
- Received 2011 Eco-Friendly Construction & Industry Award, Residence Sector

## 2011-2014

## 2015-2019

2012

- Registered as Surveying Business
- Received Grand Prize in World CM Competition
- Received the Hankook Ilbo's 2012 Award for Innovative Business of Korea
- Received Hankyung Housing Culture Award, Officetel Category, first half of 2012

2013

- Received commendation from Minister of Strategy and Finance on 47th Taxpayer's Day

2014

- Received Grand Prize of Knowledge Industry Center Award in Hankyung Housing Culture Awards, first half of 2014
- Registered as Construction and Technology Service Business
- Inauguration of Jung Byung-rae as Chairman
- Established UTOP D&C Co., Ltd.
- Registered as Electrical Construction Business
- Registered as Information and Communication Works Business
- Gwangju Jeonnam Star Brand Grand Prize
- Received Public Building Award of Korea



2015

- Received Korea Red Cross Silver Prize
- Selected as Excellent Company for Job Creation by IBK

2016

- Received Silver Tower Industrial Medal
- Received Construction Registration Certificate

2017

- Agreement of Korean Industrial Field Professors' Industrial Personnel Management Support Corporation
- Opened UTOP UBLESS Hotel Jeju
- Selected for Work-Life Balance Campaign
- Closed Surveying Business

2018

- Signed MOU with Kazakhstan University of Innovation and Technology
- Received 2019 Future Architecture Award, Officetel and Hotel Category
- Certified by Family-Friendly Certification Agency
- Received 14th Korea Civil Engineering Excellence Award, Mixed-Use Building Division
- Registered as Professional Fire-Fighting Facility Construction Business

2019

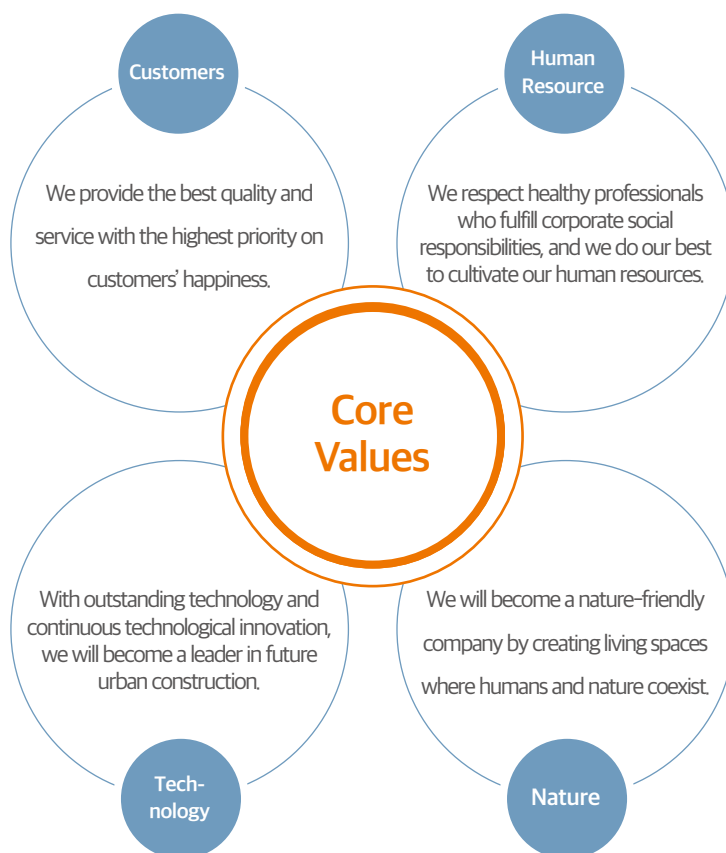
- Opened Yeosu UTOP Marina Hotel & Resort

## MISSION

“We make happy living spaces where people and nature can breathe together and raise each other’s values.”

### Nature, the home of our life!

UTOP strives to create living spaces that both resemble and coexist with nature. The living spaces created by UTOP raise the values of both mankind and nature.

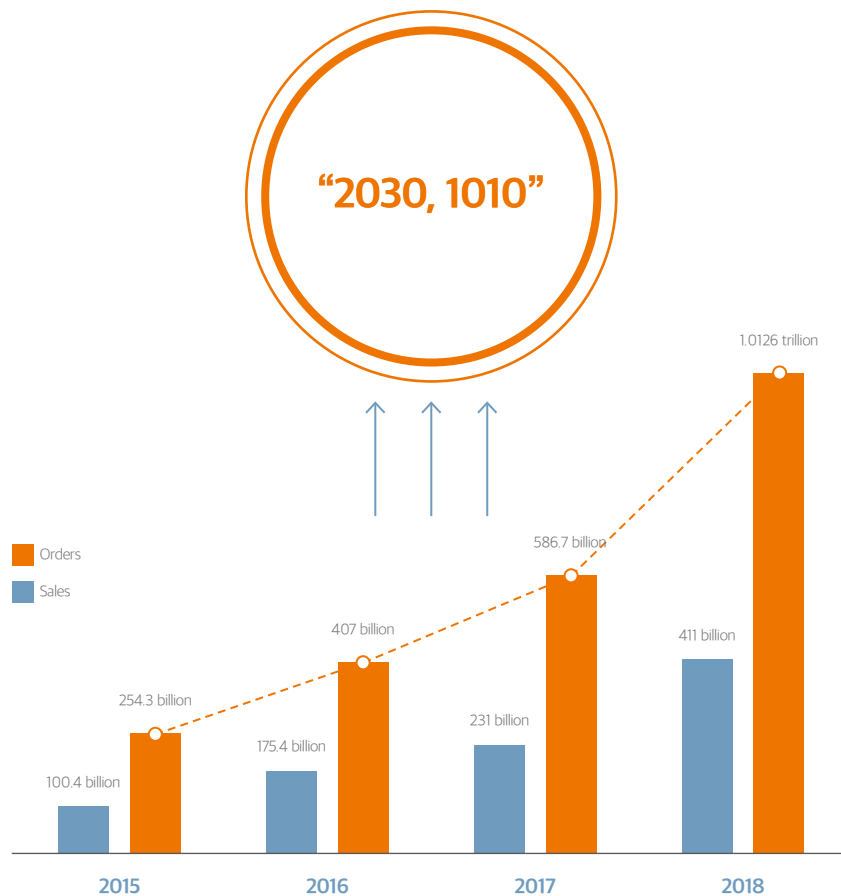


## VISION

“We will grow step by step as a comprehensive construction group leading the construction culture of Korea.”

**World's Best Technology (Universe-TOP), Customers First (YOU-TOP)**

As Korea's representative construction company, by 2030, UTOP will stand as an excellent company with 10 trillion won in sales and ranked 10th in terms of market valuation.





## UTOP BRAND

### UTOP Ubless

Your life in  
 YOU TOP, may it be the best.  
 YOU BLESS, may you be blessed and happy.

UBLESS, the flagship brand of the UTOP Group, is a combination of U (the customer) and Noblesse (nobility). UTOP, your partner in happiness construction, completes premium residential masterpieces unlike any other with the goal of making customers noble.



#### Gwangju Sangmu UTOP UBLESS Twin City

2019 Future Architectural Culture Awards - Officetel Sector Award

Received 14th Korea Civil Engineering Excellence Award, Mixed-Use Building Division

- **Gwangju Sangmu UTOP UBLESS Twin City**

Location: Sicheong-ro, Seo-gu, Gwangju  
 Scale: 5 basement levels, 37 stories / 330 households  
 Total Ground Area: 57,434 m<sup>2</sup>

- **Yangsan UTOP UBLESS Haneulliae**

Location: Myeonggok-ro mountain, Yangsan-si, Gyeongsangnam-do  
 Scale: 2 basement levels, 20 stories / 635 households  
 Total Ground Area: 73,830.966 m<sup>2</sup>

- **Jeonju UTOP UBLESS River View**

Location: Wansan-gu, Jeonju-si, Jeollabuk-do  
 Scale: 4 basement levels, 45 stories / 480 rooms  
 Total Ground Area: 81,207.7512 m<sup>2</sup>

## UTOP BRAND

# U-Tech Valley

Win with high work efficiency and competitive advantage!  
ready Knowledge Industry Center

Super-high-rise innovative designs with overwhelming scale with access to sunlight and views, a state-of-the-art smart home network system for customer tastes and lifestyles, introducing specialized services and amenities

### Efficient Workspace Design

U-Tech Valley is a high value-added knowledge industry center built by UTOP. As a complex business facility that encompasses businesses, residences, and industry, U-Tech Valley has excellent location and marketability. Above all, business competitiveness will be enhanced by the rich infrastructure, a space design suited to the characteristics of the tenant company, and the composition of sections to improve work efficiency.

### Smart Residential Complex

U-Tech Valley, which includes comfortable dormitory facilities, implements designs and systems in consideration of tenants' convenience. Underground parking spaces that are 200% the legally required size, a fitness center, and rest areas will increase the quality of living for residents.

- **Misa, Hanam U-Tech Valley**  
Location: Misa Riverside City, Haman-si, Gyeonggi-do  
Scale: 4 basement levels, 10 stories  
Total Ground Area: 88,963.20 m<sup>2</sup>
- **Jeju Euphoria Knowledge Industry Center**  
Location: World Cup-ro, Seogwipo-si, Jeju-do  
Scale: 3 basement levels, 10 stories  
Total Ground Area: 58,758.40 m<sup>2</sup>
- **Songpa Knowledge Industry Center**  
Location: Beobwon-ro, Songpa-gu, Seoul  
Scale: 4 basement levels, 13 stories  
Total Ground Area: 14,336.245 m<sup>2</sup>





UTOP BRAND



# Top Creative Builder







## UTOP Power

---

Top professionals in their fields are building creative structures based on advanced technologies. Designing spaces, UTOP boasts rapid and accurate business drive from planning and investigation to execution, construction, supervision, construction, and sale. In a new and changing era, UTOP adds value to space.

- 18 Supervision & Management Division
- 26 Architectural Design Division
- 32 Construction Development Division
- 39 Hotel & Leisure Division
- 41 Civil Engineering Division
- 43 Foreign Construction Division



# Supervision & Management Division

## Operating

Systems such as Knowledge Information System (KIMS), Construction Project Management System (PMIS), Administrative Support System (Group Ware), and Building Information Modeling (BIM) are efficiently managed by experts in their respective fields. Advanced quality control and thorough safety management reduce project costs and secure the best quality.

## Consulting

Provide relevant data for decision-making at the project planning and ordering stage, lead negotiation among participants, and support review of relevant laws and proposals (RFP) to ensure complete project planning.

## VE (Value Engineering)

Perform functional analysis and propose optimal alternatives with leading international authorized value engineering experts (CVS). Thoroughly analyze design and construction problems to prevent project risks in advance and support compliance with responsibilities.

## Expertise

We provide the best technical skills through technical support groups (Claims, Finance, Processes, VE, Cost, Energy, Remodeling, Process, Acoustics, Eco-Friendliness, IT, Specialized Design, Certification, Fire, Skyscraper) consisting of process-specific experts and experts in specialized fields.

- **Asan Tangeong Trapalace Apartment**  
Location: Tangeongmyeon-ro, Tangeong-myeon, Asan-si, Chungcheongnam-do  
Scale: 2 basement levels, 32-39 stories / 3,953 households  
Total Ground Area: 763,983 m<sup>2</sup>
- **C4 Block Apartment in Siheung Baegot New Town Special Planning Zone**  
Location: Baegot-ro, Siheung-si, Gyeonggi-do  
Scale: 2 basement levels, 40 stories / 2,695 households  
Total Ground Area: 446,889.265 m<sup>2</sup>
- **Apartments in Baekbong District, Namyangju-si, Gyeonggi-do**  
Location: Baekbong District, Namyangju-si, Gyeonggi-do  
Scale: 4 basement levels, 28 stories / 2,894 households  
Total Ground Area: 442,984.1525 m<sup>2</sup>



Supervision & Management Division





- **Gwangju Metropolitan City New City Hall**

Location: Sicheong-ro, Seo-gu, Gwangju  
 Scale: 2 basement levels, 18 stories  
 Total Ground Area: 85,950.4132 m<sup>2</sup>

- **Jeollanam-do New Provincial Government Office**

Location: Samhyang-eup, Muan-gun, Jeollanam-do  
 Scale: 2 basement levels, 23 stories  
 Total Ground Area: 79,305 m<sup>2</sup>

- **2013 Suncheon Bay International Garden Exhibition Hall**

Location: Gukgaejeongwon1ho-gil, Suncheon-si, Jeollanam-do  
 Scale: Underground power transmission line (154 kV), 3.4 km, observation facility  
 Total Ground Area: 919,508 m<sup>2</sup>

- **Dusan-dong Residential Complex**

Location: Cheongsu-ro, Suseong-gu, Daegu  
 Scale: 2 basement levels, 49 stories / Apt. 332 households, officetel 168 rooms  
 Total Ground Area: 98,657.1614 m<sup>2</sup>

- **Jinju Innovation City C-2BL Residential Complex**

Location: Yena-ro, Jinju-si, Gyeongsangnam-do  
 Scale: 2 basement levels, 25 stories / 1,081 households  
 Total Ground Area: 200,641.1303 m<sup>2</sup>



## Supervision & Management Division





- **Multipurpose Gymnasium for 2015 Gwangju Summer U Competition**

Location: Yeodae-gil, Gwangsan-gu, Gwangju  
 Scale: 8,337 seats / 6,503 static, 1,824 variable  
 Total Ground Area: 28,018.73 m<sup>2</sup>

- **Daegu Joint Government Office**

Location: Hwaam-ro, Dalseo-gu, Daegu  
 Scale: 3 basement levels, 9 stories  
 Total Ground Area: 46,948.7 m<sup>2</sup>

- **Muan General Sports Park**

Location: Hyeongyeong-myeon, Muan-gun, Jeollanam-do  
 Scale: Indoor pool, Indoor gym, Youth training center, Head office, General stadium  
 Total Ground Area: 41,473.18 m<sup>2</sup>

- **Green Culture Mutual Growth Belt Construction Project (Mungyeong district)**

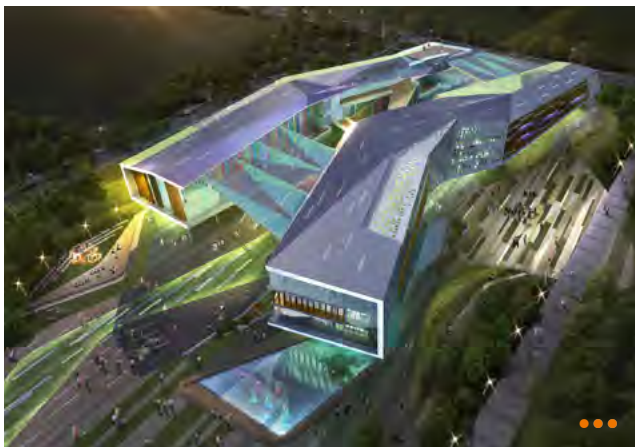
Location: Gaeun-eup, Mungyeong-si, Gyeongsangbuk-do  
 Scale: 2 basement levels, 2 stories  
 Total Ground Area: 11,427.73 m<sup>2</sup>

- **Goyang Siksa City Development Zone A3 Block Ilsan Byeoksan Blooming Apartment**

Location: 689, Siksa-dong, Ilsandong-gu, Goyang-si, Gyeonggi-do  
 Scale: 3 basement levels, 20-30 stories / 1,435 households  
 Total Ground Area: 341,425.43 m<sup>2</sup>



## Supervision & Management Division



- **Gwangju Kim Dae-jung Convention Center**  
 Location: Sangmunuri-ro, Seo-gu, Gwangju  
 Scale: 1 basement level, 4 stories / 3,000-seat multipurpose hall, 19 medium and small meeting rooms  
 Total Ground Area: 18,496.14 m<sup>2</sup>
- **Asia Culture Center**  
 Location: Munhwajeondang-ro, Dong-gu, Gwangju  
 Scale: 4 basement levels, 4 stories  
 Total Ground Area: 154,826.87 m<sup>2</sup>
- **Suncheon Citizens' Education and Culture Space**  
 Location: Jungang-ro, Suncheon-si, Jeollanam-do  
 Scale: 1 basement level, 4 stories  
 Total Ground Area: 16,678.08 m<sup>2</sup>
- **Bitgoeul Senior Health Town**  
 Location: Deongnam-gil, Nam-gu, Gwangju  
 Scale: 1 basement level, 2 stories / Elderly Welfare Facilities, Gymnasium, Cultural Center  
 Total Ground Area: 15,838 m<sup>2</sup> (including 911 m<sup>2</sup> swimming pool)

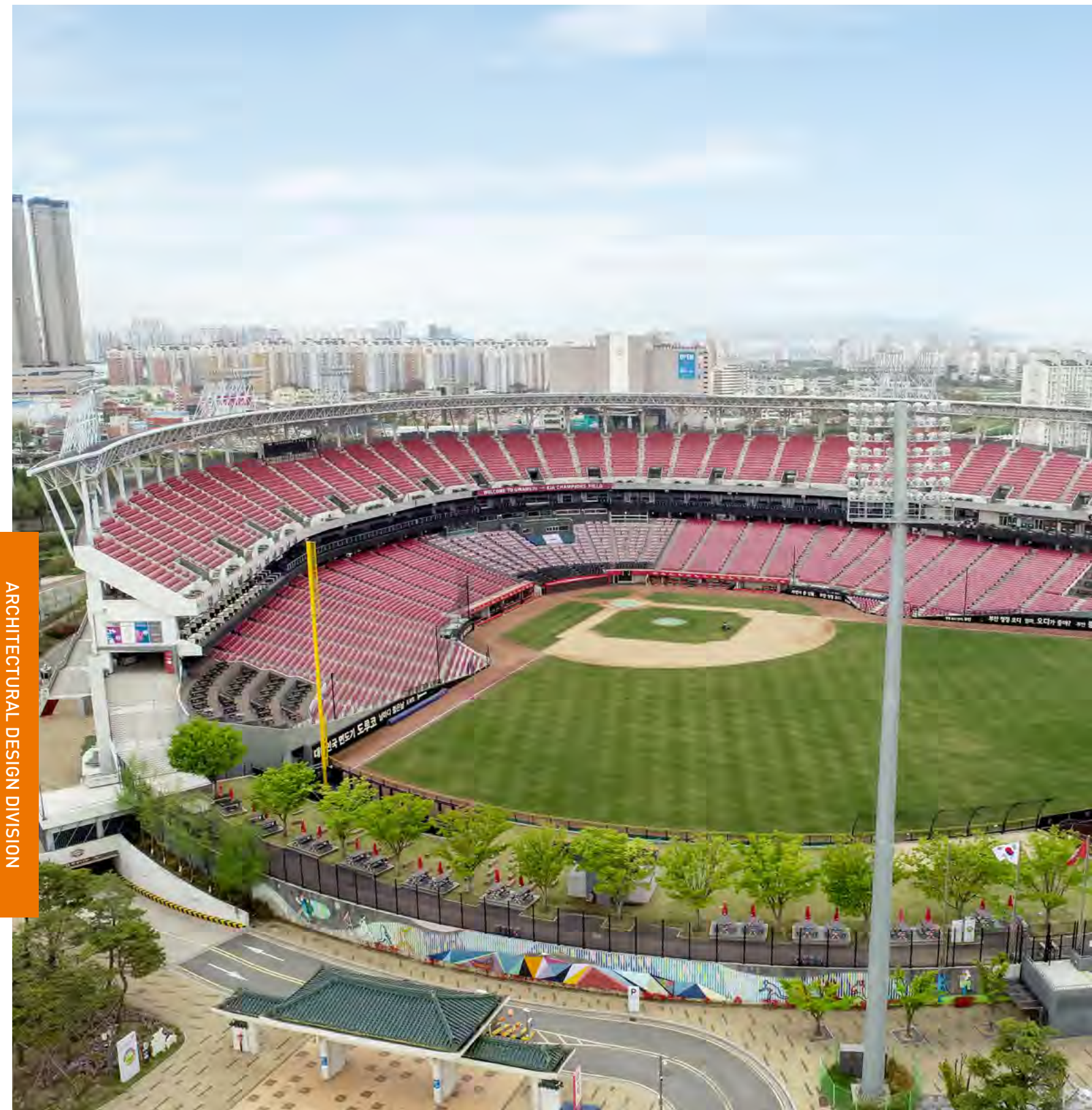






- 2015 Gwangju Summer Universiade International Tennis Court  
Location: Hwasan-ro, Nam-gu, Gwangju  
Scale: 2 basement levels, 2 stories  
Total Ground Area: 21,688 m<sup>2</sup>
- Hwasun-gun Indoor Culture and Sports Complex  
Location: Hwasun-eup, Hwasun-gun, Jeollanam-do  
Scale: 3 basement levels, 2 stories  
Total Ground Area: 16,905.60 m<sup>2</sup>
- Fermentation Microbiology Utilization Center  
Location: Sunchang-eup, Sunchang-gun, Jeollabuk-do  
Scale: HACCP Meju Plant, Fermentation Microorganism Control Center, Wastewater Joint Prevention Facility  
Total Ground Area: 13,299.85 m<sup>2</sup>
- Gwangju World Cup Stadium  
Location: Geumhwa-ro, Seo-gu, Gwangju  
Scale: 5 basement levels / 43,121 seats, 2,839 parking spaces  
Total Ground Area: 87,726 m<sup>2</sup>





ARCHITECTURAL DESIGN DIVISION





# Architectural Design Division

## Construction Design

Careful analysis of all aspects of the project allows clear and reasonable design goals to be established. For successful completion of the task, we prepare creative and high-quality plans to provide the best design.

## Business Plan

We provide the best service in the calculation of important factors such as business size, business feasibility review, and design in the early stages of business. We realize your project with business proposals to create customer value and achieve your goals.

## BIM (Building Information Modeling)

BIM is a technology that analyzes, produces, and manages all information in the entire life cycle of a building, from design to maintenance. Fast and accurate flawless design with BIM prevents problems during construction. Real-time construction cost forecasts and design changes are immediately derived to reduce construction time and costs.



- **Gwangju-Kia Champions Field**  
Location: Seorim-ro, Buk-gu, Gwangju  
Scale: 2 basement levels, 5 stories  
Total Ground Area: 55,413.28 m<sup>2</sup>
- **Gwangju Summer Universiade International Swimming Pool**  
Location: Cheomdanjungang-ro, Gwangsan-gu, Gwangju  
Scale: 1 basement level, 3 stories  
Total Ground Area: 19,416.76 m<sup>2</sup>
- **National Institute of Horticultural & Herbal Science Controlled Horticultural Research Institute**  
Location: Jinhnam-ro, Haman-myeon, Haman-gun, Gyeongsangnam-do  
Scale: 1 basement level, 4 stories  
Total Ground Area: 30,993.85 m<sup>2</sup>
- **Suncheon Bay International Wetland Center**  
Location: Gukgajeongwon1ho-gil, Suncheon-si, Jeollanam-do  
Scale: 1 basement level, 2 stories  
Total Ground Area: 9,985 m<sup>2</sup>

Architectural Design Division





● **Gwangju CGI Center**

Location: Songam-ro, Nam-gu, Gwangju  
 Scale: 1 basement level, 10 stories  
 Total Ground Area: 14,286 m<sup>2</sup>

●● **Imhae Training Center**

Location: Dohwa-myeon, Goheung-gun  
 Scale: 1 basement level, 4 stories  
 Total Ground Area: 12,557 m<sup>2</sup>

●●● **Mokpo Maritime University Library**

Location: Haeyangdaehak-ro, Mokpo-si  
 Scale: 1 basement level, 3 stories  
 Total Ground Area: 4,810 m<sup>2</sup>

●●●● **Gwangju Innobiz Center**

Location: Samsu-ro, Buk-gu, Gwangju  
 Scale: 1 basement level, 10 stories  
 Total Ground Area: 14,768 m<sup>2</sup>

● **Suncheon Bay Job World**

Location: Haeryong-myeon, Suncheon-si  
 Scale: 1 basement level, 2 stories  
 Total Ground Area: 8,000 m

●● **Chonnam Provincial University Complex Student Dormitory**

Location: Damyang-eup, Damyang-gun  
 Scale: 1 basement level, 4 stories  
 Total Ground Area: 5837.81 m<sup>2</sup>

●●● **Suncheon Eco-Edu Experience Center**

Location: Namseungnyong-ro, Suncheon-si  
 Scale: 1 basement level, 3 stories  
 Total Ground Area: 18,989 m<sup>2</sup>



## Architectural Design Division



- **Gwangju National Science Museum Astronomical Education Accommodations**  
 Location: Cheomdangwagi-ro, Buk-gu, Gwangju  
 Scale: 1 basement level, 3 stories  
 Total Ground Area: 2,525 m<sup>2</sup>
- **Jungheung 5-Class**  
 Location: Samho-eup, Yeongam-gun, Jeollanam-do  
 Scale: 2 basement levels, 25 stories  
 Total Ground Area: 183,614 m<sup>2</sup>
- **Pyeongtaek Sosabeol District**  
 Location: Sosabeol, Pyeongtaek-si, Gyeonggi-do  
 Scale: 1 basement level, 25 stories  
 Total Ground Area: 110,236 m<sup>2</sup>
- **Yeosu Youth Marine Education Center**  
 Location: Odongdo-ro, Yeosu-si  
 Scale: 1 basement level, 4 stories  
 Total Ground Area: 6,238 m<sup>2</sup>
- **Cheongju Jibuk District A4 Block**  
 Location: Sangdang-gu, Cheongju-si  
 Scale: 1 basement level, 15 stories  
 Total Ground Area: 19,467 m<sup>2</sup>
- **Hwajeong Eliche Firstige**  
 Location: Geumhwa-ro, Seo-gu, Gwangju  
 Scale: 2 basement levels, 23 stories  
 Total Ground Area: 37,608 m<sup>2</sup>
- **Yangsan Sasong District 3 H1 Block**  
 Location: Dong-myeon, Yangsan-si  
 Scale: 1 basement level, 17 stories  
 Total Ground Area: 9,844.44 m<sup>2</sup>







CONSTRUCTION DEVELOPMENT DIVISION







# Construction Development Division

## Development Business

We provide a full range of services from initial business feasibility analysis to design, construction, and maintenance. Based on accumulated development business experience, we minimize the risks in the business period and select the optimal construction cost to maximize customer satisfaction.

## Leasing Business

We provide a differentiated comprehensive housing integration system that enables thorough location and business analysis, customized design, construction management, and maintenance.

Rather than providing a simple rental business limited to only construction and sale, we lead with a novel-concept residential culture that can be trusted and selected by customers: the Three Happinesses of UTOP (constructors, purchasers, and users).

## Construction

Decades of supervision experience and UTOP's unique construction management system provides safe and high-quality products in the best possible conditions.

- **Jeonju UTOP UBLESS River View**  
Location: Wansan-gu, Jeonju-si, Jeollabuk-do  
Scale: 4 basement levels, 45 stories / 480 households  
Total Ground Area: 81,207.7512 m<sup>2</sup>
- **Yangsan UTOP UBLESS Haneulliae**  
Location: Singi-ro, Yangsan-si, Gyeongsangnam-do  
Scale: 2 basement levels, 20 stories / 635 households  
Total Ground Area: 73,830.966 m<sup>2</sup>
- **Sinchang UTOP UBLESS River View**  
Location: Jangsin-ro, Gwangsan-gu, Gwangju  
Scale: 2 basement levels, 20 stories / 473 households  
Total Ground Area: 73,898.8206 m<sup>2</sup>
- **Gwangju Sangmu UTOP UBLESS Twin City**  
Location: Sicheong-ro, Seo-gu, Gwangju  
Scale: 5 basement levels, 37 stories / 330 households  
Total Ground Area: 57,434 m<sup>2</sup>



Construction Development Division



- **Osan UTOP UBLESS**  
 Location: Wondong-ro, Osan-si, Gyeonggi-do  
 Scale: 4 basement levels, 15 stories / 445 households  
 Total Ground Area: 29,965.11 m
- **Namak UTOP UBLESS 900**  
 Location: Samhyang-eup, Muam-gun, Jeollanam-do  
 Scale: 2 basement levels, 18 stories / 895 households  
 Total Ground Area: 42,521 m<sup>2</sup>



- **Daejeon Daehwa District 2**  
 Location: Daehwa-ro, Daedeok-gu, Daejeon  
 Scale: 2 basement levels, 36 stories / 1,424 households  
 Total Ground Area: 186,399 m<sup>2</sup>
  
- **Gangnam UTOP UBLESS**  
 Location: Jagok-ro, Gangnam-gu, Seoul  
 Scale: 4 basement levels, 10 stories / 513 households  
 Total Ground Area: 29,103.72 m<sup>2</sup>
  
- **Yangsan UTOP UBLESS Sky View**  
 Location: Haseo-ro, Buk-gu, Gwangju  
 Scale: 4 basement levels, 39 stories / officetel 68 rooms,  
 Apt. 102 households  
 Total Ground Area: 27,982.1199 m<sup>2</sup>

Construction Development Division





- **Hanam Misa U-Tech Valley**  
 Location: Misa Riverside City, Haman-si, Gyeonggi-do  
 Scale: 4 basement levels, 10 stories  
 Total Ground Area: 88,963.20 m<sup>2</sup>
- **Nongseong-dong UTOP UBLESS**  
 Location: Gyeongyeol-ro, Seo-gu, Gwangju  
 Scale: 1 basement level, 14 stories / 292 households  
 Total Ground Area: 9,520 m<sup>2</sup>
- **Guri Twin Palace**  
 Location: Geombae-ro, Guri-si, Gyeonggi-do  
 Scale: 4 basement levels, 18 stories / 656 households  
 Total Ground Area: 50,577.62 m<sup>2</sup>
- **Hapdeok Wugang UTOP UBLESS**  
 Location: Wugang-myeon, Dangjin-si, Chungcheongnam-do  
 Scale: 2 basement levels, 20 stories / 144 households  
 Total Ground Area: 51,417.28 m<sup>2</sup>
- **Hwajeong-dong UTOP UBLESS**  
 Location: Naebang-ro, Seo-gu, Gwangju  
 Scale: 2 basement levels, 15 stories / 520 households  
 Total Ground Area: 21,529 m<sup>2</sup>



HOTEL & LEISURE DIVISION



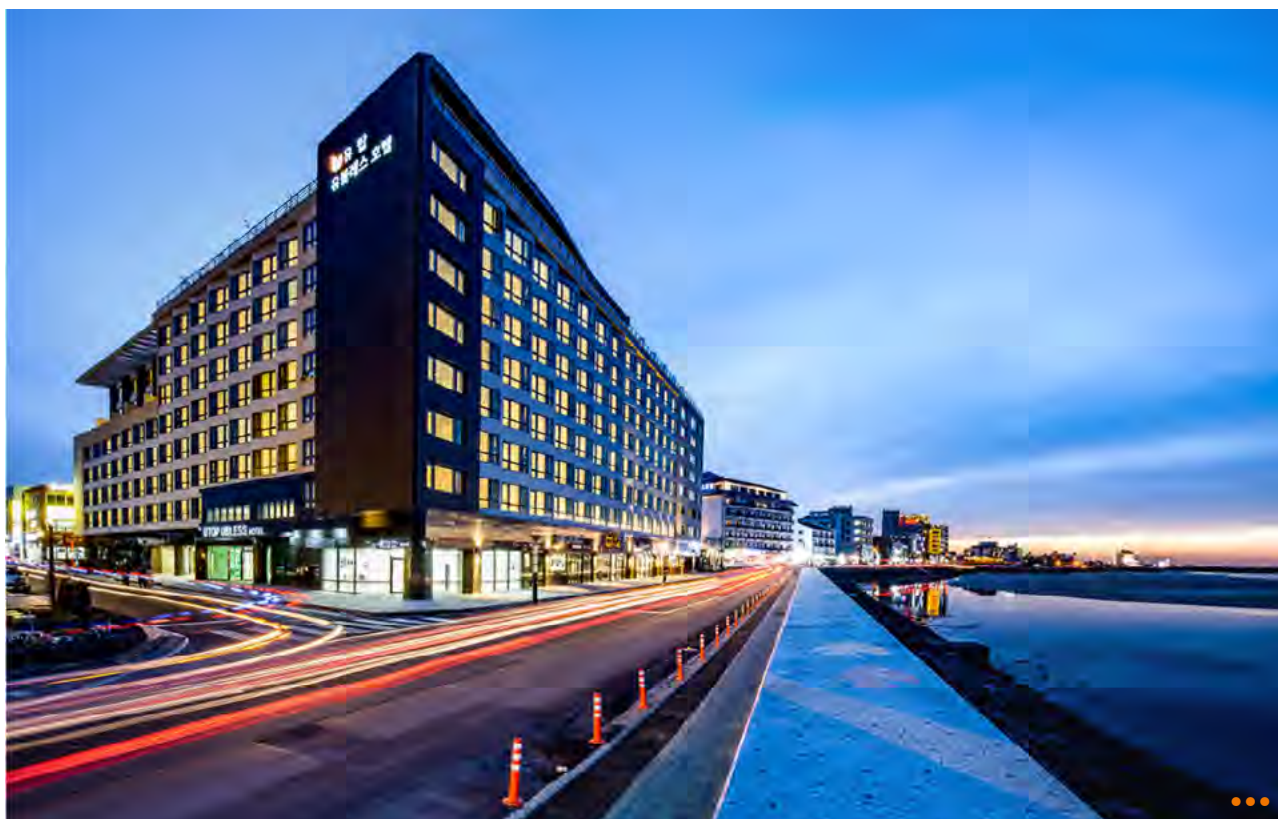
## Hotel & Leisure Division

- **Yeosu UTOP Marina Hotel & Resort**  
Location: Odongdo-ro, Yeosu-si, Jeollanam-do  
Scale: 2 basement levels, 24 stories / 389 rooms  
Total Ground Area: 30,800 m<sup>2</sup>
- **Gwangju UTOP Boutique Residence**  
Location: Sangmujungang-ro, Seo-gu, Gwangju  
Scale: 5 basement levels, 31 stories / 488 rooms  
Total Ground Area: 27,029 m
- **UTOP UBLESS Hotel Jeju**  
Location: Jocheon-eup, Jeju-si, Jeju  
Scale: 2 basement levels, 8 stories / 290 rooms  
Total Ground Area: 14,425 m<sup>2</sup>

UTOP is active in all areas of construction by expanding its business to hotels, amusement facilities, and resort development through accumulated development projects, construction, design, and operation management experience.

Various amenities in line with our changing lifestyle are raising the level of UTOP's hotel leisure culture business by securing high competitiveness with elegant design and advanced technology.

Comprehensively managing everything from construction to operation, the hotel and leisure facilities created to customers' standards provide the best in relaxation and inspiration.





CIVIL ENGINEERING DIVISION







## Civil Engineering Division

Create beautiful spaces that harmonize with nature!

Based on specialized technology and skillful experience, UTOP is carrying out civil engineering projects that harmonize with nature throughout the country.

We at UTOP will create a new map of Korea, changing the vast landscape with a persistent challenging spirit and a systematic strategy to achieve our goals.

- **Repair Work for School District Farming Convenience Irrigation Facilities**  
Location: Hampyeong-eup, Hampyeong-gun, Jeollanam-do and two other areas  
Period: Nov. 3, 2015 - Dec. 20, 2017  
Scale: Waterway Structure 22 trillion 6,372 m, Subcontracting Type 1
- **Daedeok Regional Breakwater Renewal Work**  
Location: Daedeok-ri, Beopseong-myeon, Yeonggwang-gun, Jeollanam-do  
Period: Dec. 30, 2013 - Feb. 5, 2017  
Scale: Breakwater Renewal Work L = 235 m
- **Road Construction from Doam Uchi to Cheongpung Chari**  
Location: Baegun-ri, Cheongpung-myeon, Hwasun-gun, Jeollanam-do  
Period: Mar. 2, 2011 - Mar. 1, 2013  
Scale: Road L = 2.98 km, B = 8.0 m
- **Road Expansion and Pavement for the County Road 18 (Shin-dong to Bangsan)**  
Location: Sindong-ri and Bangsan-ri, Dado-myeon, Naju-si, Jeollanam-do  
Period: Dec. 19, 2008 - Sept. 4, 2011  
Scale: Road L = 1.39 km, B = 8.0 m





FOREIGN CONSTRUCTION DIVISION





## Foreign Construction Division

Having built up a solid reputation in the domestic construction industry, UTOP is actively involving itself in foreign construction projects with high barriers to entry, contributing to the reconstruction of the region and revitalization of the tourism industry.

Beyond the domestic market, we will continue to strengthen our position in foreign construction by making outstanding achievements in the global market with excellent quality and technology.

**Raising the First Flag in Marawi City!**  
 First domestic construction company that received order for Marawi complex resort facility in the Philippines!

- Philippines Mandadao Aerial View
- Philippines Mandadao Clubhouse
- Philippines Mandadao Mosque
- Philippines Mandadao Gate



Warm  
Hearted  
Creator





## UTOP Love

---

Valuing happiness above all else, UTOP joined in mutual growth together with its employees, with a warm heart towards the world. In addition, we are participating in various social contribution projects to realize sustainable love and hope-sharing management.

- 46 UTOP of the TOP
- 48 Social Contribution
- 50 UTOP Network





## UTOP of the TOP

Valuing happiness as a top priority and fostering the ability of each of its employees, UTOP is becoming a visionary construction company that talented people aspire to work with.



21st Century  
**Building Culture  
Leader  
Company**



Company Credit  
Rating

**A**



Selected as  
**top company for  
excellent labor-  
management culture**



Received Silver Tower Order  
of Industrial Service Merit  
**Presidential Commendation**

(Excellent employment promotion  
company for the elderly)



Certified  
**excellent  
family-friendly  
company**



Korea Civil Engineering  
Technology Award  
**Excellence Award**

(Gwangju Sangmu UTOP UBLESS  
Twin City)

※ As of 2019

Social Contribution







## Sharing Management & Practice

Practicing true sharing of people, UTOP implements sharing management in person through various social contribution activities. Believing that sharing is the driving force of change in society, our employees actively participate in volunteer work and donations to help our neighbors and contribute to the development of the community.

We will continue sharing in the hope of a better, more prosperous world.





## UTOP Engineering

### Headquarters

21-5, Jachisaem-ro, Hwasun-eup, Hwasun-gun, Jeollanam-do, Republic of Korea  
T. +82-61-371-0406  
F. +82-61-371-0433

### Gwangju Branch

92, Sicheong-ro, Seo-gu, Gwangju  
T. +82-62-530-8700  
F. +82-62-228-8558

### Seoul Branch

13F, Beobwon-ro, Songpa-gu, Seoul  
T. +82-2-2046-2300  
F. +82-2-586-5715



## UTOP Construction

### Headquarters

92, Sicheong-ro, Seo-gu, Gwangju  
T. +82-62-526-8383  
F. +82-62-526-8382

### Seoul Branch

13F, Beobwon-ro, Songpa-gu, Seoul  
T. +82-2-2046-2300  
F. +82-2-586-5715



## UTOP D & C

### Headquarters

92, Sicheong-ro, Seo-gu, Gwangju  
T. +82-62-526-8384  
F. +82-62-526-8382

### Seoul Branch

13F, Beobwon-ro, Songpa-gu, Seoul  
T. +82-2-2046-2300  
F. +82-2-586-5715



**UTOP UBLESS Hotel Jeju**

502, Johamhaean-ro, Jocheon-eup, Jeju-si, Jeju

T. +82-64-780-9300

F. +82-64-780-9301

YEOSU EXPO  
**UTOP MARINA**  
Hotel & Resort

**Yeosu UTOP Marina Hotel & Resort**

61-15, Odongdo-ro, Yeosu-si, Jeollanam-do

T. +82-61-690-8000

F. +82-61-690-8001



**Headquarters**

92, Sicheong-ro, Seo-gu, Gwangju, Republic of Korea  
T. +82-62-530-8700 F. +82-62-228-8558

**Seoul Branch**

13F, Beobwon-ro, Songpa-gu, Seoul  
T. +82-2-2046-2300 F. +82-2-586-5715